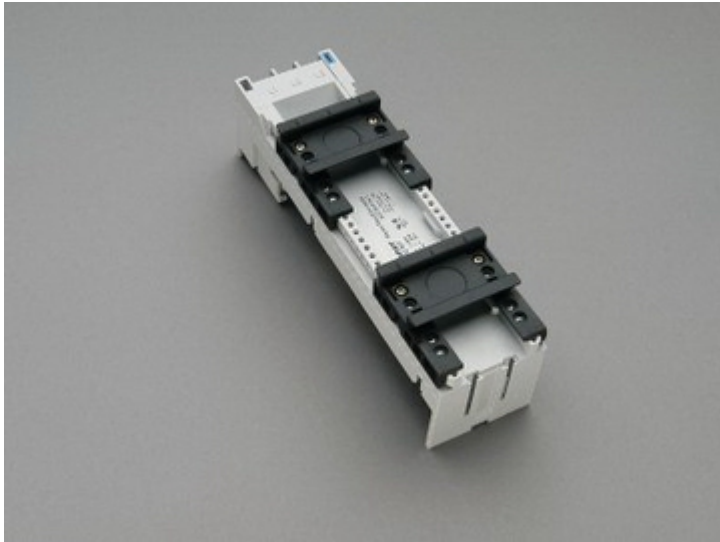


adapter EEC 80 A, 2 adjustable mounting rails (32 467)



Description

Article

Part No.: 32 467

EQUES® 60Classic

adapter EEC 80 A, 2 adjustable mounting rails

with screw terminals from rear

54 x 200

for busbars 12, 15, 20, 25, 30 x 5, 10 and section busbars

System

60Classic

Product group 05

Subgroup 27

pack size 4

EAN 4021267324674

Catalog page 2015 : 2/12

eCl@ss 6.1 27370304
eCl@ss 7.1 27370304
ETIM 4.0 EC001531
ETIM 5.0 EC001531

Approvals

Standards

IEC 61439-1:2011

Approvals

CSA, UL, Germanischer Lloyd



for UL feeder circuits >250V

Type number: EEC6080-L

UL file: E123577, UL category (for USA): NMTR <http://www.ul.com>

UL file: E123577, UL category (for Canada): NMTR7 <http://www.ul.com>

CSA file: 110285, CSA class: 3211-37 <http://directories.csa-international.org>

CCC approval: no certification required

Product data

Electrical data

Rated current (IEC): 80 A

Rated voltage (IEC) AC: 690
V

Rated current (UL): 80 A

Rated voltage (UL) AC: 600
V

Power dissipation:

The power dissipation at a typical load of 80% of the rated current results to 6 W.

(The power dissipation for operation with rated current would be 9.3 W.)

rated isolation voltage U_i (AC): 800
V
Rated surge voltage U_{imp} : 6 kV
max. permitted voltage (IEC) AC: 800
V
max. permitted voltage (IEC) DC: 800
V

short-circuit withstandability: the motor starter gives the protection to the adapter

Mechanical data

W x H x D: 54 x 200 x 63
Weight: 38.9 kg/100
Poles: 3-pole
for busbars: 12, 15, 20, 25, 30 x 5, 10 and section busbars

Material properties

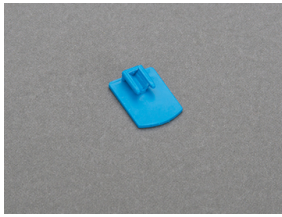
Body: temperature stability 125°C,
self-extinguishing in acc. to UL 94,
creepage resistance CTI 600,
halogen-free
DIN temperature stability 125°C,
rail: self-extinguishing in acc. to UL 94,
creepage resistance CTI 550,
halogen-free
Screws: screw +/- (PZ1), galvanized, chromized

Conductor insulation: temperature-resistant up to 105 °C

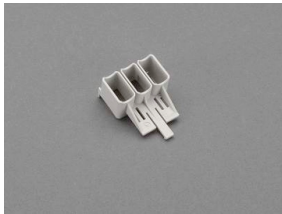
Reference

for feeder circuits as per UL508a, accessory 32974 is required

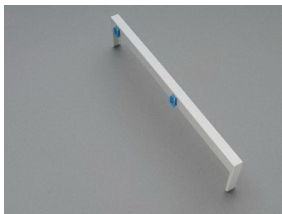
Accessories



32 969
mounting rail end stop



32 974
terminal cap for UL
for EEC 80 A



32 963
side-mounted module EEC
attachable at both sides
9 x 200



32 914
Lead AWG 4 (25mm²), 210mm long



32 915
Double-lead 2 x AWG 10 (2 x 6mm²), 130 / 280mm long